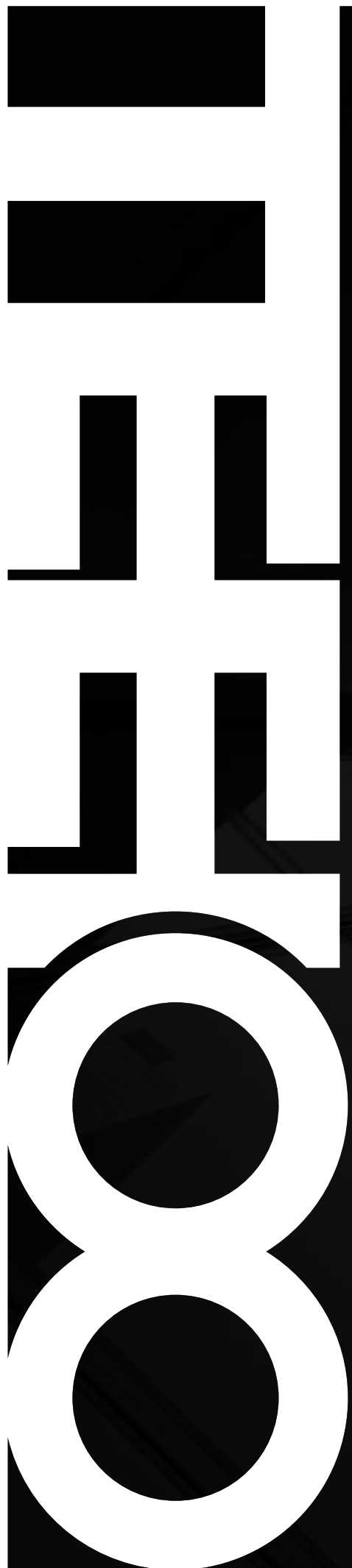


**AL SAMAH TEEHOO**

السماح تيهو

AL SAMAH TEEHOO CO., LTD.  
[www.samah-teehee.com](http://www.samah-teehee.com)





## **AL SAMAH TEEHOO CO., LTD**

Joint venture between AL SAMAH technical factory in Saudi Arabia and TEEHOO stainless steel from China, located in Riyadh-Sulay district, specializes in one-stop solution of decorative stainless steel, from raw materials processing, fabrications as cutting, grooving, bending, laser, welding, and polishing, to PVD (Physical Vapor Deposition), Nano anti-finger print and Antique finish, enjoying high convenience of service, transportation and communication.

Based on 40+ years successful experience as a stainless steel pioneer as AL SAMAH, and 20+ years PVD innovator of decorative stainless steel as TEEHOO, we're proud to contribute to "SAUDI 2030 VISION" as Quality, Service and Efficiency first, by firm relationship with our strategic partners coming from construction, decoration, design, kitchen, elevator, furniture industrial etc.

Educating the markets, leading the trend beyond expectation, we're willing to work hand in hand with valuable clients to contribute to SAUDI 2030 VISION and share success with everyone!

### **Our Vision:**

Contributing a substantial future through continuous innovation coupled with lifecycle services

### **Our Mission:**

Leading the regional suppliers in decorative and industrial stainless steel

### **Our Value:**

Integrity, Morality, Professionalism, Celerity, Persistence





## Chairman Message



Dear valued partners and esteemed clients,

I extend my warmest welcome to all of you as we embark on an exciting journey through the world of Al Samah Teehoo Co., Ltd.

At the forefront of decorative stainless steel sheeting processing, cutting-edge architectural metal works, PVD coating, Nano-AFP and Antique surface finish to projects, we stand as a testament to creativity, innovation, and engineering prowess.

Based on 20+ years successful experience in China, we're proud to be the first investor here in decorative stainless steel industrial in Saudi Arabia. Today, I am incredibly proud of the exceptional team we have assembled, each contributing their unique skills and passion to create art works that blend functionality and aesthetics seamlessly.

Our diverse portfolio of offerings showcases the depth of our expertise and the breadth of our capabilities. We bring life to visionary architectural designs, enhance the durability and appeal of every aspect of decorative stainless steel industry. From the design stage to execution, we adhere to the highest industry standards, ensuring that our products and services stand strong in their excellence and reliability.

Educating the markets, leading the trend beyond expectation, beyond expectation, we're willing to work hand in hand with valuable clients to contribute to SAUDI 2030 and further!

Your faithfully

VINSON  
Chairman of the Board

# PRODUCTS AND SERVICES

**8K Mirror Process**

**Brush, HL and Satin Process**

**Options for stainless steel sheets**

**Fabrication and Projects**

**PVD Coating**

**Nano-Anti Finger Print**

**Antique Finish**





## 8K Mirror Process

A highly reflective, non-directional finish, super 8K, 10K or 12K mirror effect, manufactured by grinding followed by top polishing of the surface in the presence of specific chemicals, advanced polishing heads, water cyclic system and experience, this results in a surface equivalent to that of a glass mirror. A very popular finish among architects, interior designs, especially for signs, ceiling and elevators, this finish is truly an eye catcher.







## Brush, HL and Satin Process

Stainless steel sanding machine is a device used for metal surface treatment. It forms specific textures on the surface of stainless steel through physical friction, thereby changing the appearance and properties of the material. It is widely used in various fields such as building decoration, industrial equipment, home decoration, automobile manufacturing, electrical appliance manufacturing, etc.



## Extra Finish on Brush

The polished stainless steel surface is more wear-resistant and appears to be of a higher grade, while also increasing its anti slip performance and extending its service life



Red antique copper  
wire drawing



Black titanium  
wire drawing

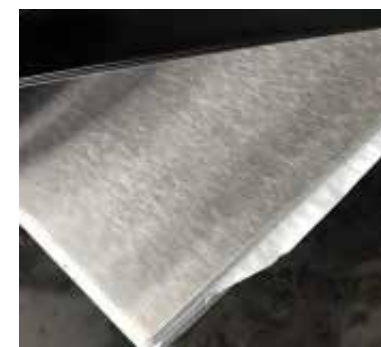


Green antique copper  
wire drawing



Silver brushed

## Satin,HL and N4





# Fabrication and Projects

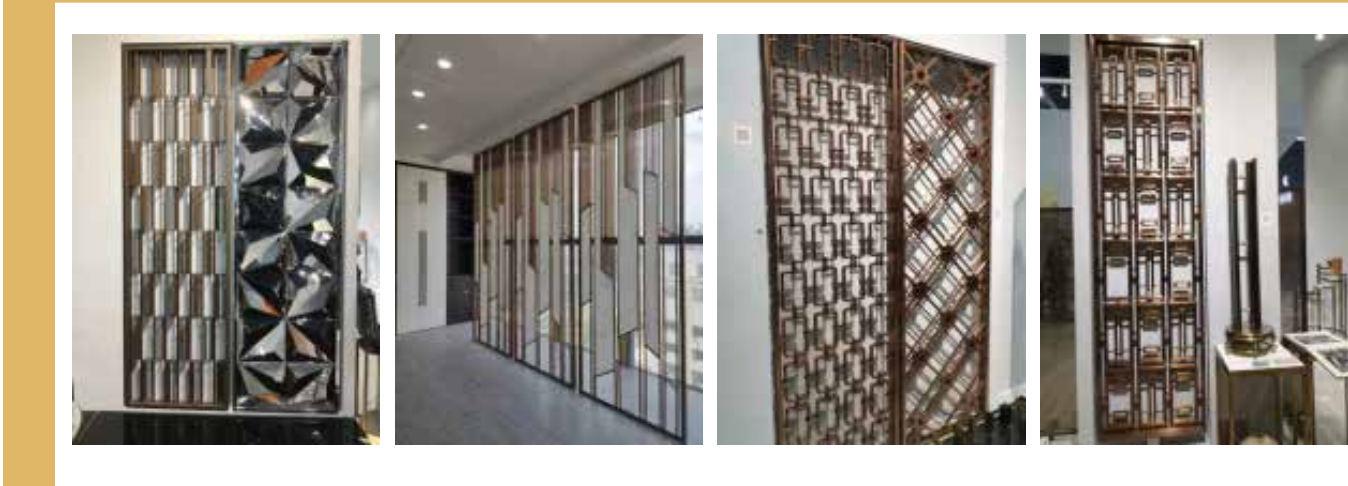
Stainless steel processing equipment refers to equipment used for mechanical processing such as shearing, bending, welding, etc. of stainless steel materials to manufacture stainless steel products required for industrial production.



These devices play an important role in the stainless steel processing, ensuring the quality and performance of stainless steel products. Different processing equipment is suitable for different processing requirements and the thickness of stainless steel materials. Choosing the appropriate equipment is crucial for improving production efficiency and product quality.



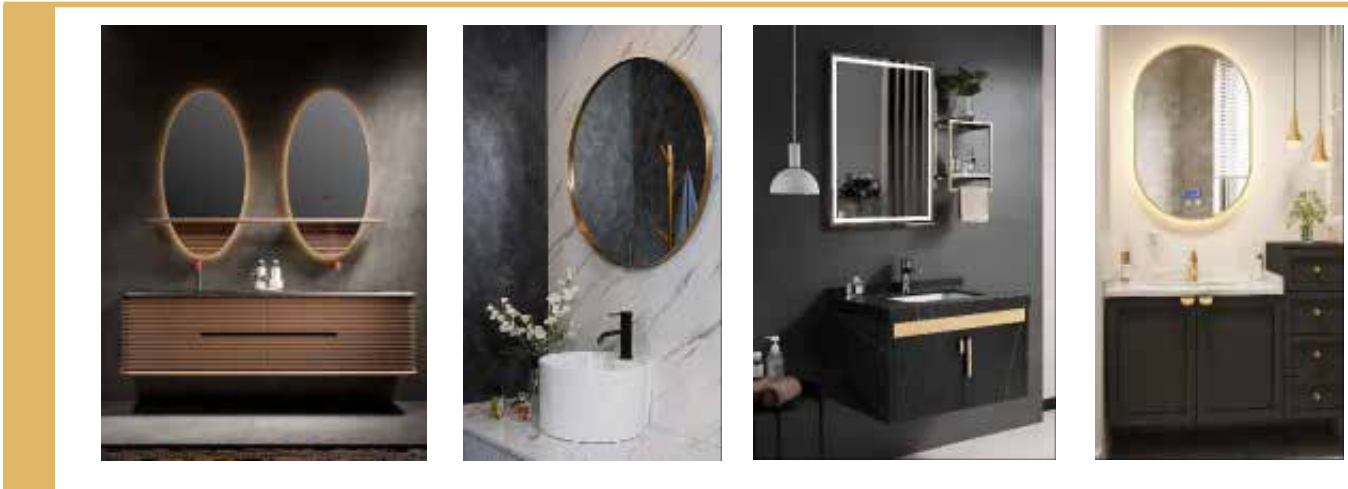
## Screen



## Cabinet

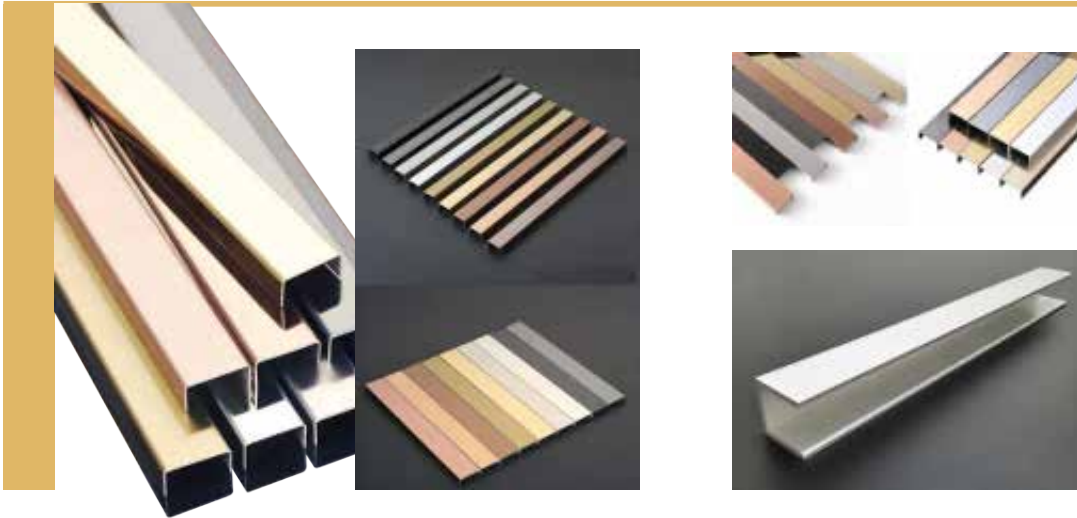


## Stainless steel frame

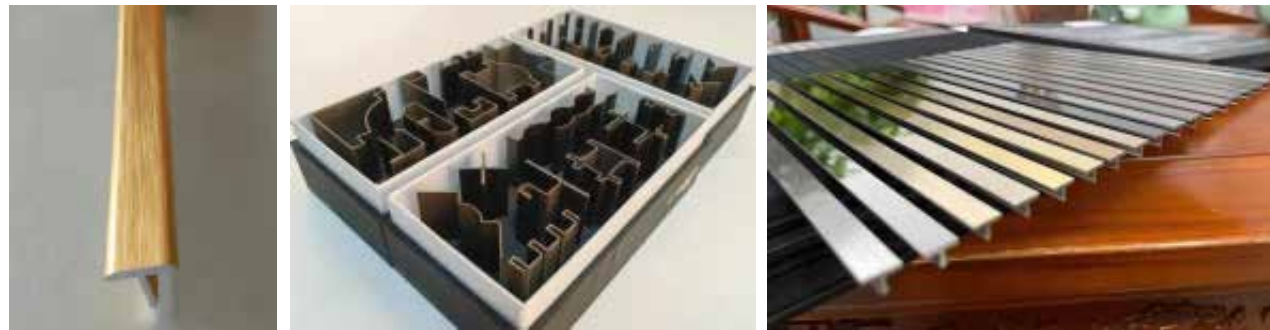




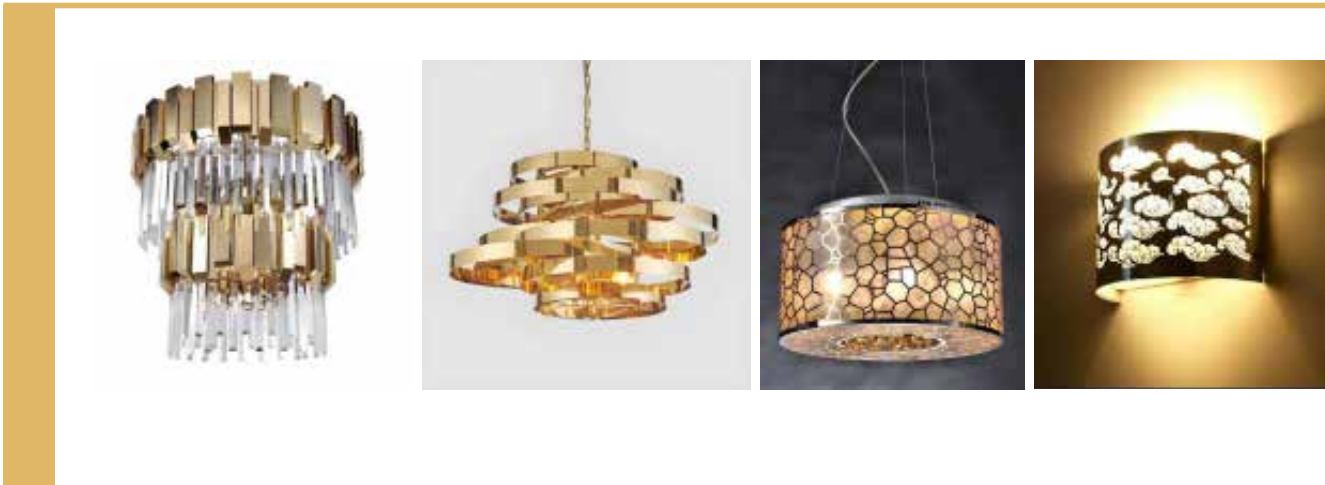
## U-shaped groove



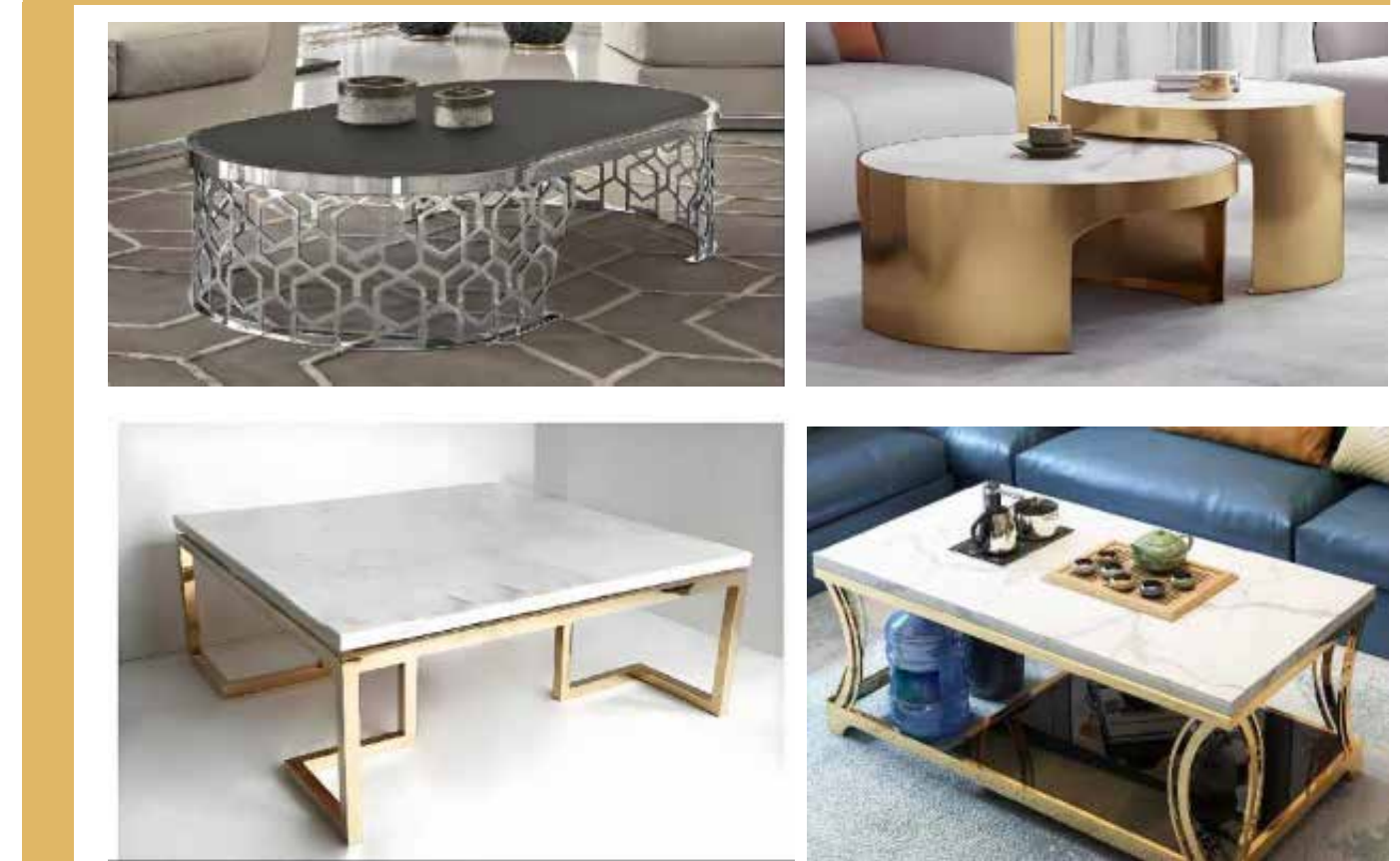
## T-shaped groove



## Lighting



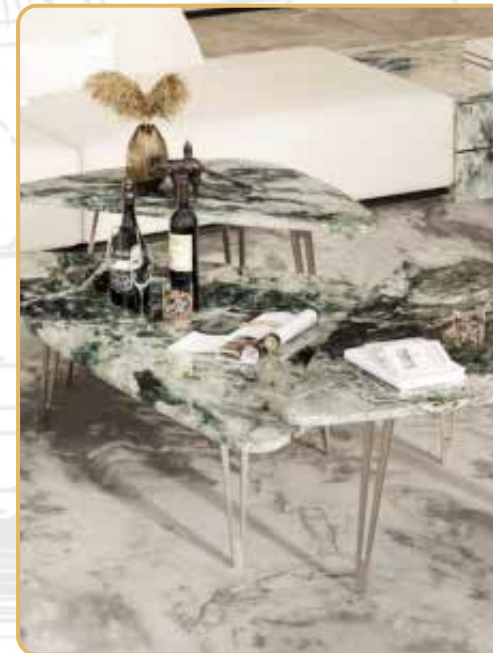
## Stainless steel coffee table



## Advertising sign















## PVD coating



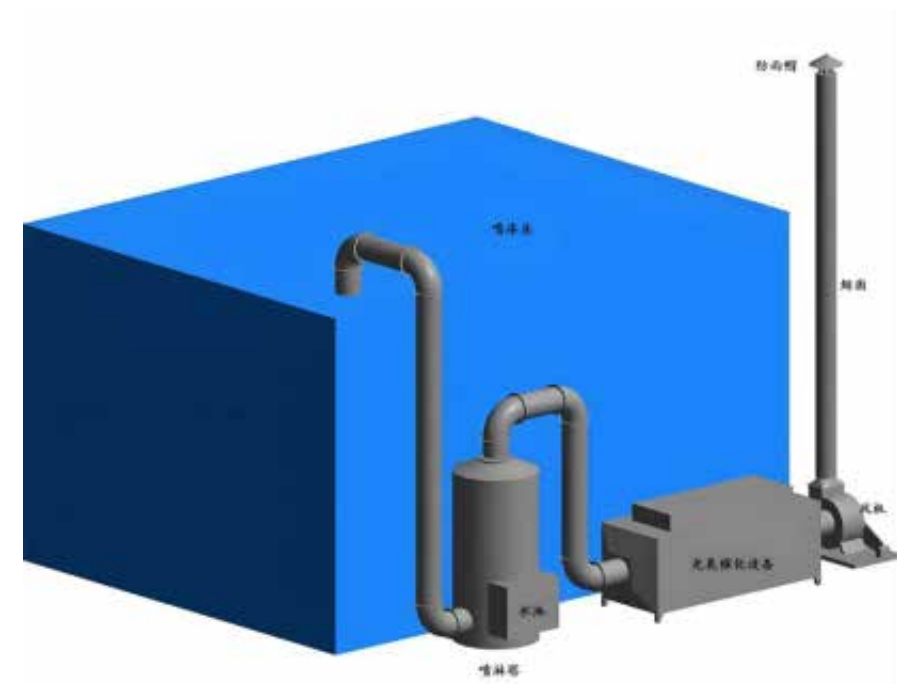
Benefits of Physical Vapor Deposition (PVD):

- 1, Durability: PVD coatings are typically harder and more resistant to wear, corrosion, and scratches.
  - 2, Uniform Thickness: PVD allows for precise control over the thickness and uniformity of the coating.
  - 3, Environmentally Friendly: PVD processes often involve fewer hazardous materials compared to traditional plating methods.
  - 4, Enhanced Appearance: PVD can achieve various finishes, from metallic to colorful, enhancing the aesthetic appeal of products.
- Overall, PVD is valued for its performance and versatility across many applications.

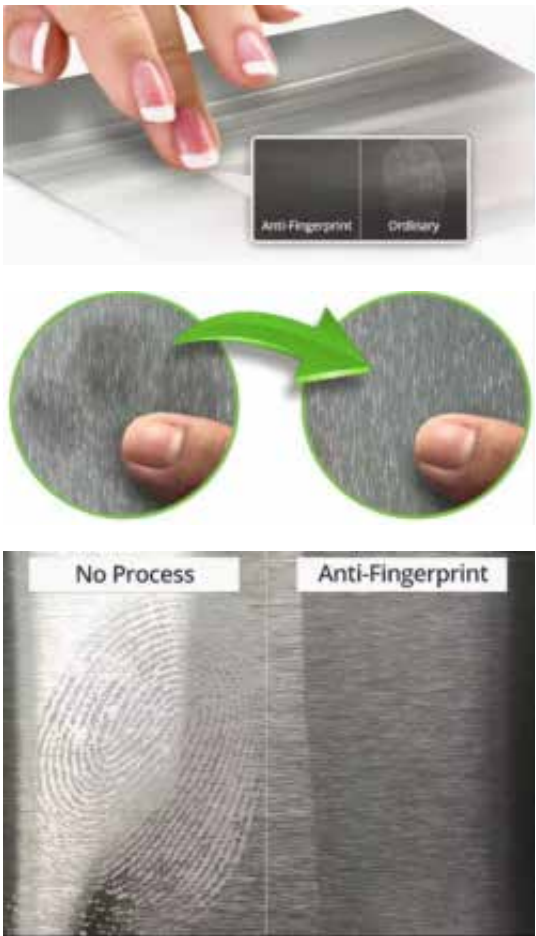




# Nano-Anti Finger Print



Stainless steel nano anti fingerprint machine is a device used to apply nano level anti fingerprint coating on the surface of stainless steel. This technology can significantly reduce the adhesion of fingerprints and stains on the surface of stainless steel, thereby improving the beauty of the product and the convenience of cleaning and maintenance



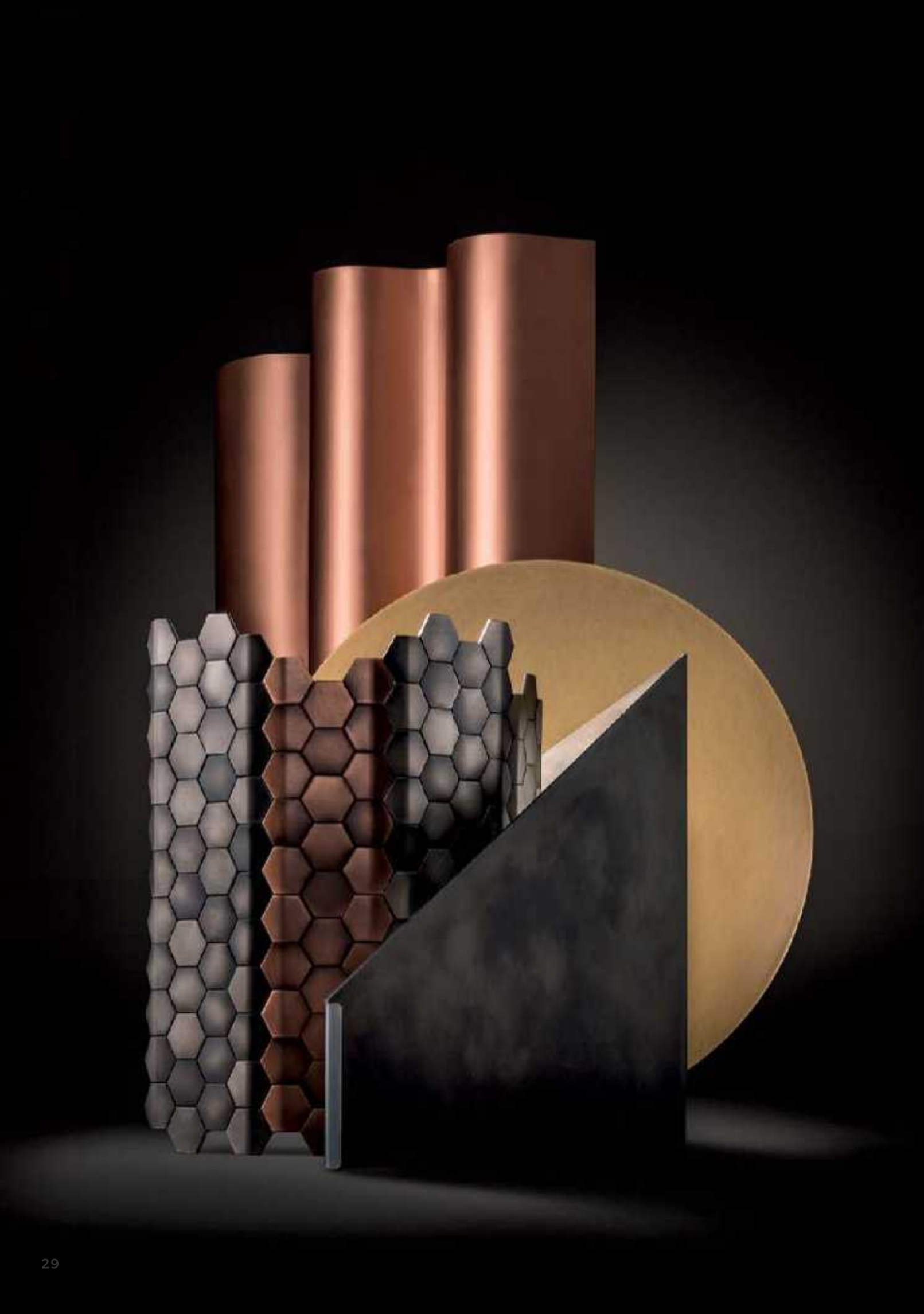
A variety of anti-fingerprint (AFP) coating technologies are capable of functionalizing numerous substrate types to have anti fingerprint properties. Anti fingerprint coatings and treatments significantly increase the hiding power and easier of cleaning of various substrates, including metal with roughening or texture. In addition, these AFP coatings are ultra thin (nanoscale), optically clear and quite durable. There are numerous performance advantages to having anti fingerprint coated surface on countless stainless steel applications, including gloss AFP, matt AFP, color-supportive AFP

# Antique Finish

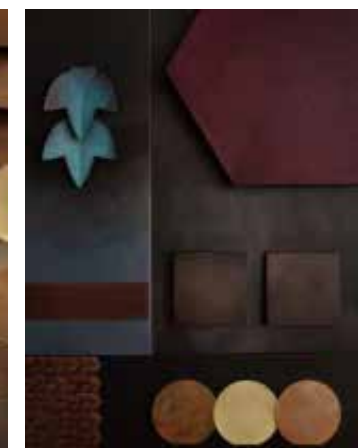
Antique bronze aging is a surface treatment process that can give copper or copper alloy surfaces a color and texture similar to antique bronze. This effect is particularly popular in the field of decoration







## Antique Finish







100% ODM

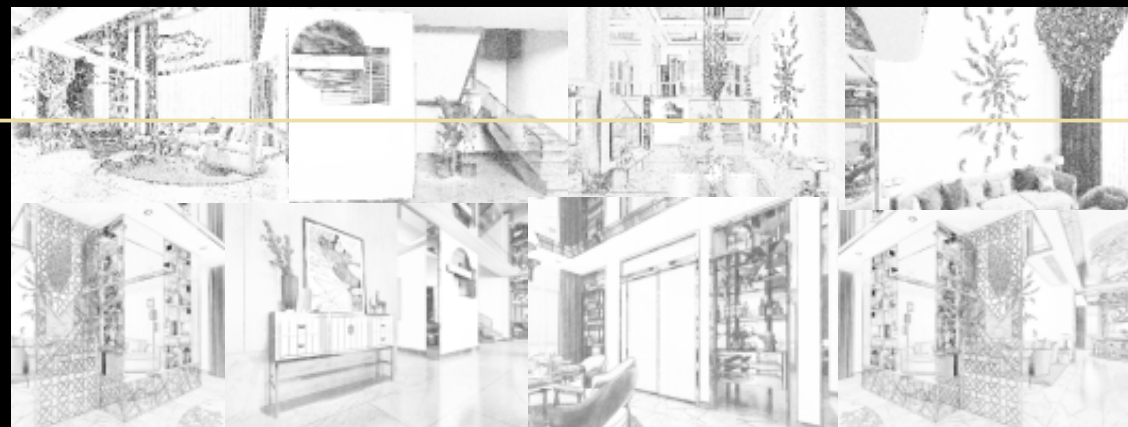
Know more about art stainless steel

Unique design, only for you

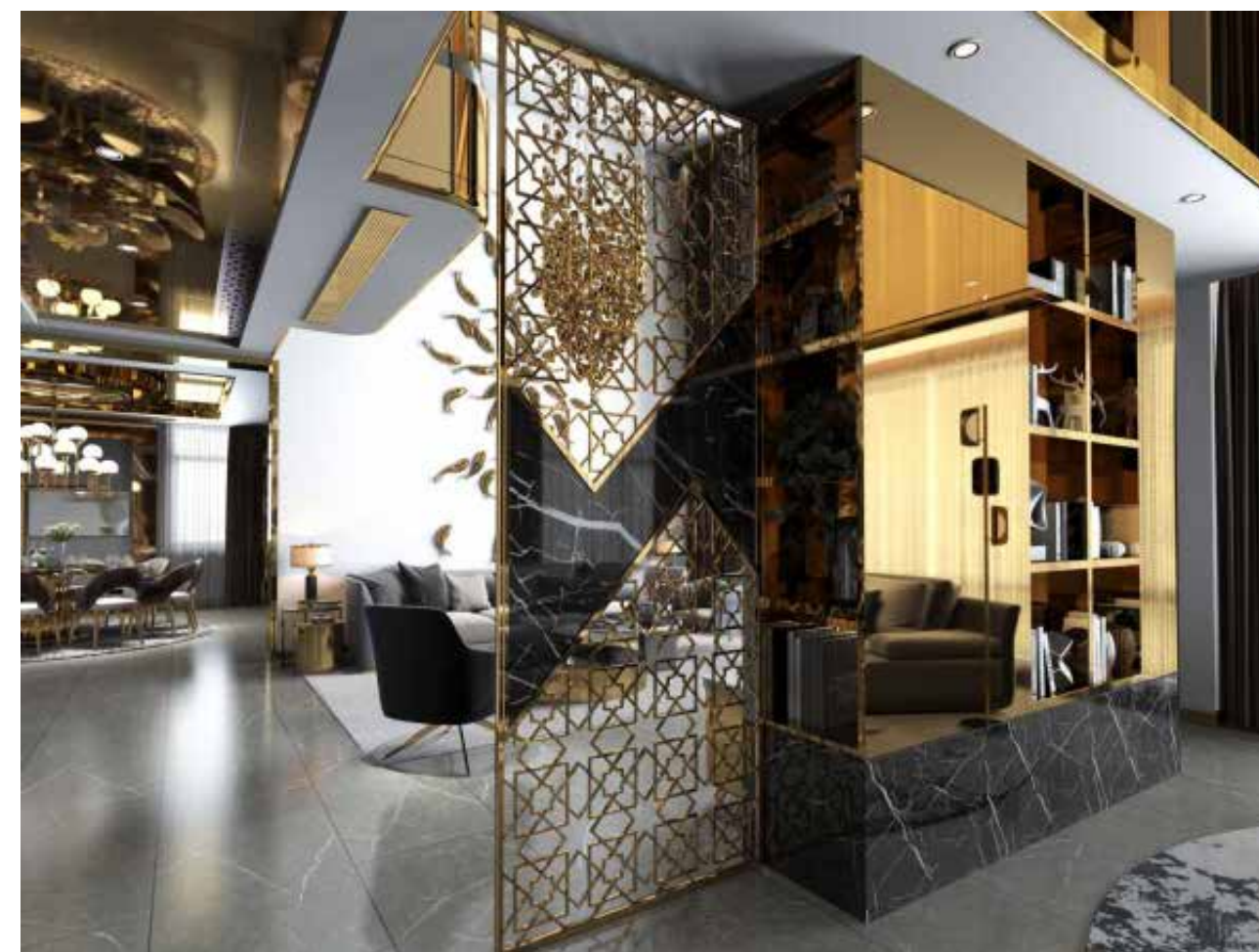
One-Stop, total solution







## Interior Decoration



Art  
stainless  
steel

Excellent  
quality

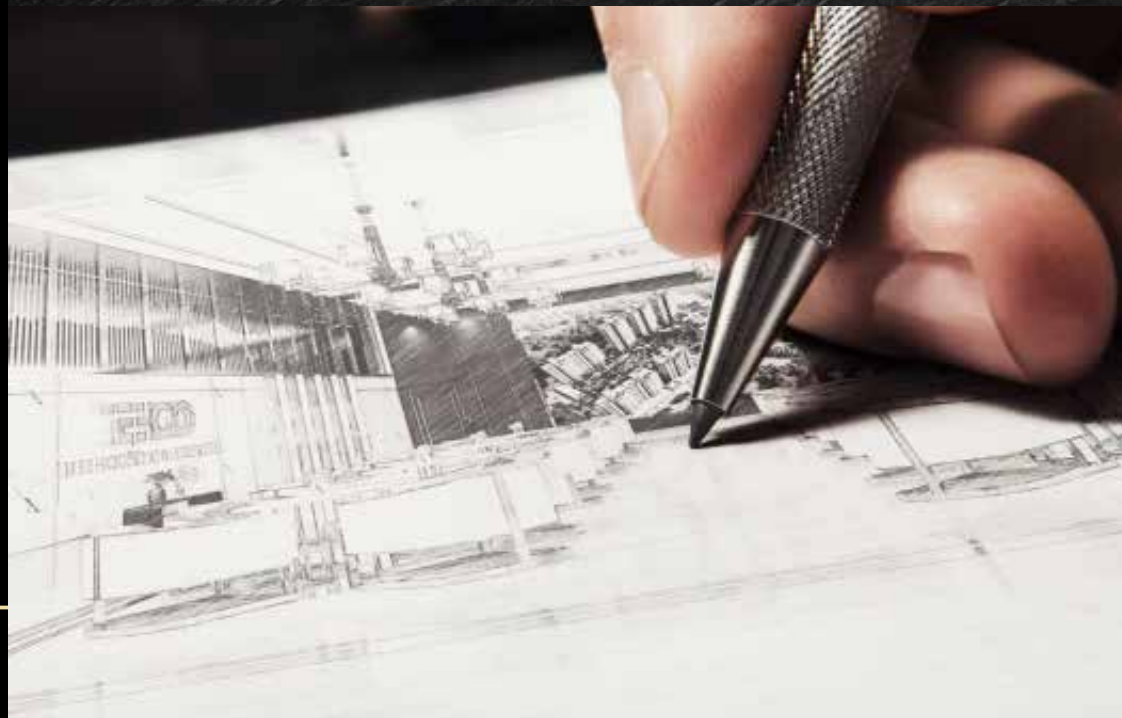
Italy  
Standard







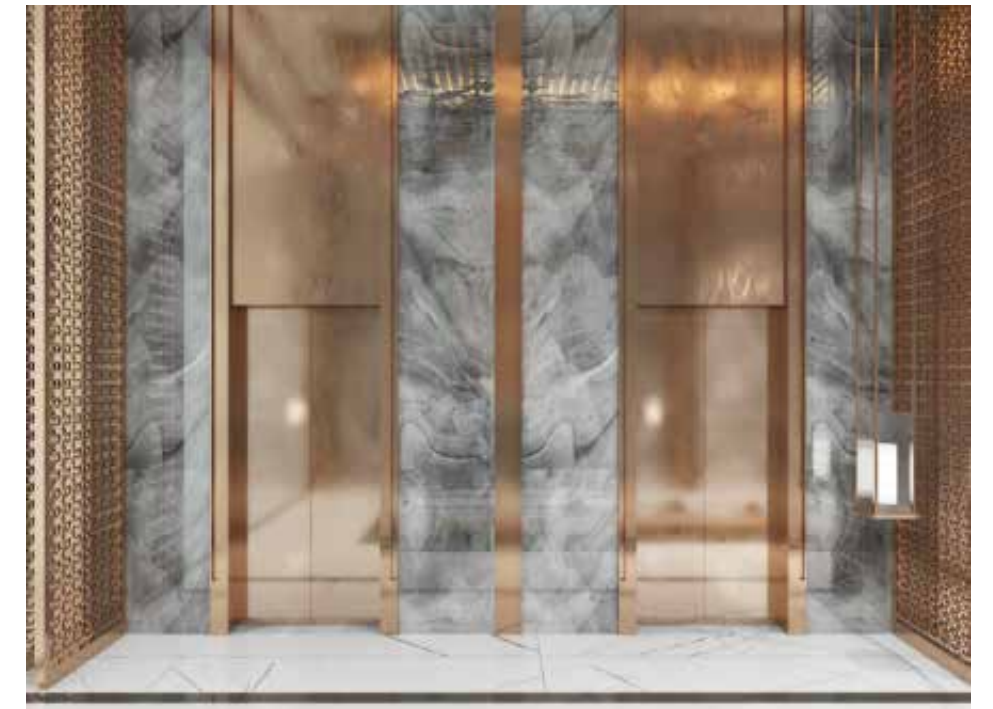
## Real Estate Center







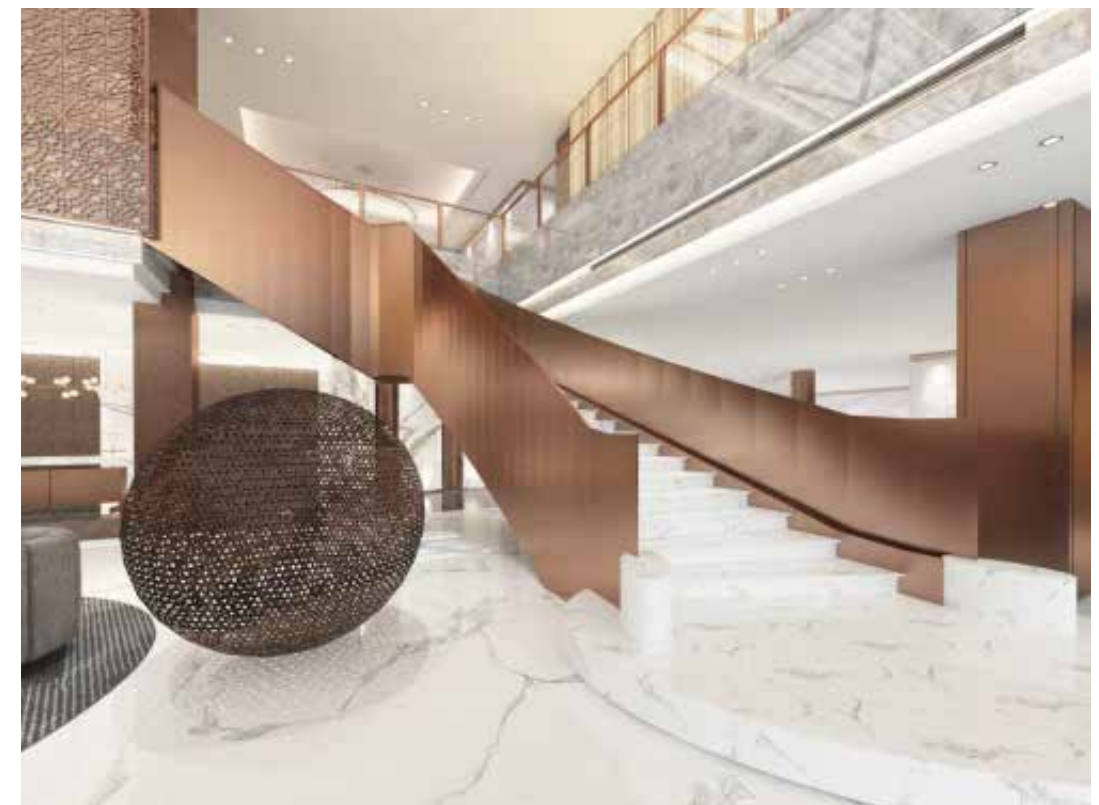
## Elevator Space







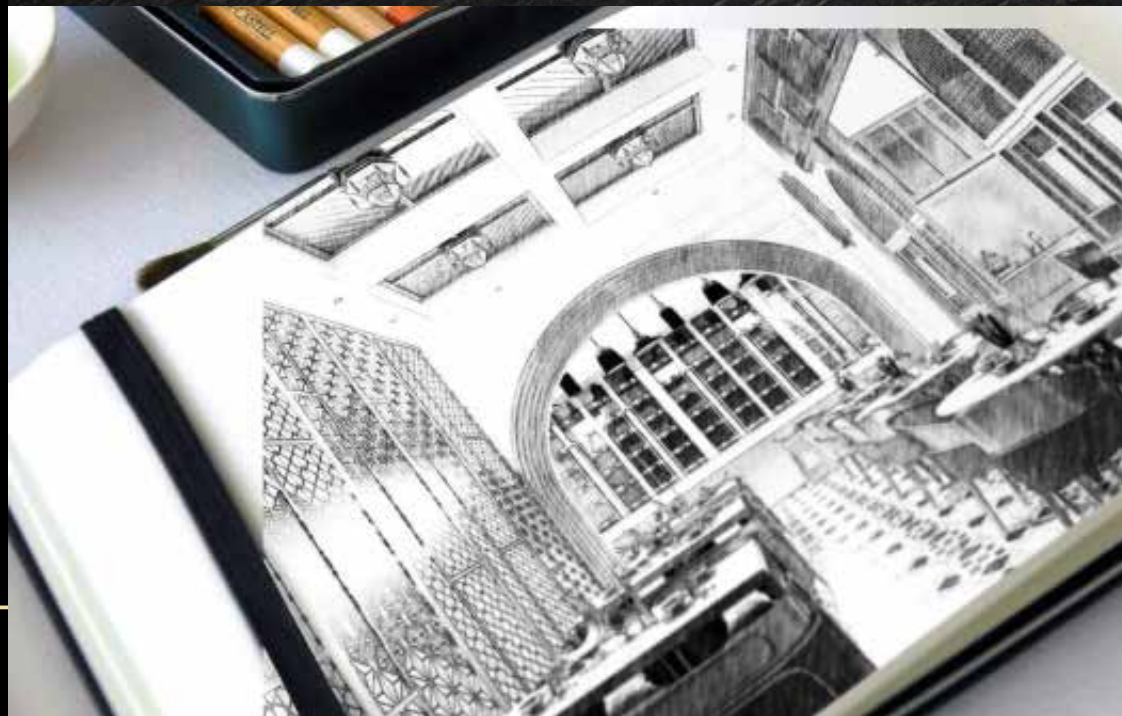
## Hotel Lobby







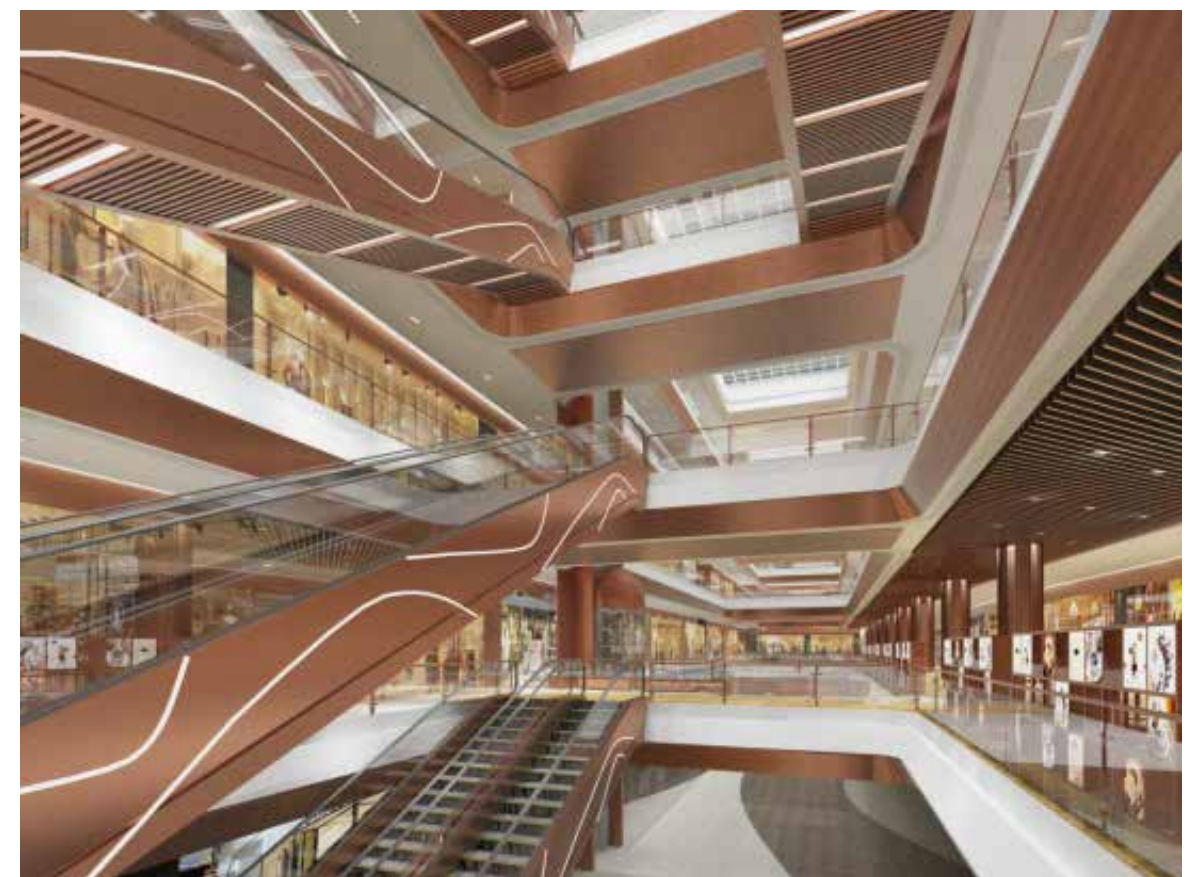
## Coffee Shops







## Shopping Malls







## Luxury Shops





# Contact us

**ADD: Building No. 6410, Khaibar Street,  
Sulay District, 14264, Riyadh, Saudi Arabia**

**6410 شارع خير 3310 حي السلي 14264 الرياض - المملكة العربية السعودية**

**TEL:**

**+966 560 256 943 (PVD)**

**+966 560 583 528 (Fabrication)**

**+966 560 576 988 (Sheets)**

**Email: [sales@samah-teehoo.com](mailto:sales@samah-teehoo.com)**

**Website: [www.samah-teehoo.com](http://www.samah-teehoo.com)**

