



MAHITO

## Mahito commitments

1. To Listen:

Mahito is available for you and proposes solutions that match your needs and processes

2. Innovation:

Mahito uses modern material and technologies to guarantee high standards and continuous improvements

3. Belgium design and conception

We prioritises aesthetics, security and quality

4. Collaboration

Motivated people having a common sense of well done work

5. Our values

Magnificent, Attractive, High quality, Innovative, Trendy, Open-minded (MAHITO)

6. Sustainability

We manage our business in a way that is respectful of the environment (garbage recycling, energy saving, appropriate packing, etc

## Luxury hairdryer

- *Ultimate Maestrea* (ref. 23021704 CE plug – 23021704UK UK plug)
  - Elegant luxury hairdryer
  - Hair-dryer 2000 W
  - Nano brushless motor technology
  - Ionic generator
  - 9 temperatures/speeds settings
  - 170 km/h speed air
  - Cool air setting
  - Removable air filter
  - Extra light (385g)
  - CE norms
  - Warranty 2-years



# Hairdryers

- *Mahito Sensa 2100W Ionic & touch technology*

- Elegant design
- Security: touch sensor operated
- 3 temperatures & 2 speeds
- Cool button
- Concentrator nozzle
- Removable air filter
- Belgium design and conception
- Warranty 2-years



## Valera Hairdryer

- Valera Action 1800 Push:
  - Ripple wire SECURITY heating element
  - On/Off Security
  - Slide switch: 2 air flow settings, 3 air temperature settings
  - COOL air setting
  - Spiral cord
  - Warranty 3-years
  - Made in Switzerland
  - *Alternative: Excel 1800 TF*



## Valera Hairdryer – wall mounted

- ***Premium 1200 Super*** (1200 W, 1600W or Action Super Plus 1800):

- Ripple wire SECURITY heating element
- On/Off Security
- Slide switch: 2 air flow settings, 3 air temperature settings
- COOL air setting
- Spiral cord
- Warranty 3-years
- Made in Switzerland

- ***Excel 1600 Shaver silver***



## Hospitality tray – Kettle Mytea

- **Mytea black double wall**
  - Elegant stainless steel 360 cordless kettle 0,6L
  - Strix electrical device
  - Ergonomic handle
  - Manual switch on/off
  - Concealed heating element
  - Automatic shut-off
  - Concealed heating element
  - 220-240 V, 50-60 Hz
  - Warning light
  - Safety device should the jug be switched on without water
  - Easy to open and easy to clean
  - CE norms & Intertek certification
  - Belgium design and conception
  - Made in China
  - Warranty: 2-years



## Hospitality tray – Kettle Utea

- **Utea black double wall**
  - Elegant stainless steel 360 cordless kettle 0,6L
  - Strix electrical device
  - Ergonomic handle
  - Manual switch on/off
  - Concealed heating element
  - Automatic shut-off
  - Concealed heating element
  - 220-240 V, 50-60 Hz
  - Warning light
  - Safety device should the jug be switched on without water
  - Easy to open and easy to clean
  - CE norms & Intertek certification
  - Belgium design and conception
  - Made in China
  - Warranty: 2-years





## Hospitality tray – Kettle Tefal Safetea

- **Safetea black**
  - Elegant stainless steel 360 cordless kettle 1L
  - Double wall kettle
  - Ergonomic handle
  - Assisted opening lid
  - Manual switch on/off
  - Concealed heating element
  - Automatic shut-off
  - 220-240 V, 50-60 Hz
  - Warning light
  - Safety device should the jug be switched on without water
  - Easy to clean
  - CE norms & Intertek certification
  - French design and conception
  - Made in China
  - Warranty: 2-years



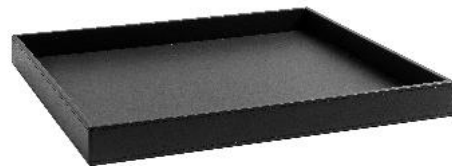
## Hospitality tray – Customized according to your need

- **Ophelia 30** – *A touch of modernity*
  - Base tray (390x300x37 mm) and sachet tray in leatherette finishing
  - Mytea kettle 0,6L
  - Colors according to your need
  - Belgium design and conception
  - Made in China



## Hospitality tray

- **Courtesia 35** to combine Nespresso machine and kettle
  - Base tray (390x350x40 mm) in leatherette finishing
  - Black, brown color as standards
  - Customization according to your need
  - Belgium design and conception
  - Made in China
- **Mytea**
  - Kettle 0,6L
- **Dispa** *sachet tray*
  - Black, brown color as standards
  - Customization according to your need



## Hospitality tray – Nespresso machine

- Nespresso **Pixie** – probably the best choice
  - Elegant and contemporary design
  - Robust frame
  - Espresso & lungo setting
  - Automatic ejection of Capsule
  - Auto-off after 9 min
  - 220/240 V - 50/60 Hz
  - Made in Switzerland
  - Warranty 2-years



## Luxury Steamer

- Access Steam (ref. 22063004)
  - Powerful handheld steamer with contemporary and elegant design
  - Heated soleplate, plus vertical support, for perfect steaming
  - Three steam settings up to 30g/min for high-efficiency results
  - 0.2L removable tank, locking trigger and 3m cord for mobility
  - Anti-drip, stable base and auto-off for safety, plus six accessories
  - 1600W - 220/240V
  - Warranty 2-years



## Wardrobe ironing centre

- **Excelia ironing board black:**
  - Fire retardant cover
  - Invisible hook when open
  - Luxury felt pad 600g to optimize ironing
  - Very stable board and strong construction
  - Adjustable height 10 positions
  - Dim 114x38 cm ironing surface
  - Made in Italy
- **Fixel big iron organizer**
  - Anti-theft bracket & cable storage
  - Assembly to the ironing board
  - Made in Belgium
- **Supersteam Iron – Elegant design**
  - Auto-off iron
  - Dry and steam iron (variable steam) - Spray mist and steam shot
  - Self-clean, anti-drip
  - 220/240 V – 50/60 Hz
  - Power cord 2,5m
  - Ceramic soleplate
  - Warranty 2-years – Belgium design – Made in China



## Wardrobe ironing centre

- Mahito **Conforta** ironing board:
  - Fire retardant cover
  - Invisible hook when open
  - Luxury felt pad 600g to optimize ironing
  - Very stable board and strong construction
  - Adjustable height 10 positions
  - Dim 114x38 cm
  - Made in Italy
- **Fixa** iron organizer and hook
- **Supersteam** iron in black version



## Torch light

### Features:

- LED Rechargeable Wall-mounted Flashlight
- Material: Aluminum alloy shell
- Anti-slip rubber handle
- 13 LEDs
- Battery: 3 AA - Dim. 185\*60\*55 mmn
- Strong construction





## Luxury luggage rack

- **Mahito Florencia:**

- Elegant and convenient luggage rack
- Luxury and contemporary design
- Wood and leatherette finishing
- Resistant up to 80 kg
- Dim 650x550x635 mm
- Colours according to your request
- Design and production in Belgium



## Guestroom waste bin

- Waste bin Brabantia **Corbina** 7L matt steel
  - Pure Design
  - Resist corrosion
  - Easy to clean
  - Made in Belgium
- Waste bin Mahito **Rondina** Double Wall
  - Black leatherette finishing
  - Dim. 22,5 x 27 cm
  - **Color could be adapted according to you need**
  - Made in China
- Waste bin Brabantia **Etoufa** Brilliant steel
  - Capacity 7L
  - Made in Belgium



## Guestroom leatherette items

- Mahito **Artica**

- Ice bucket
- Stainless steel bucket with tong
- Color according to your need
- Leatherette



- Mahito **olia Directa**

- Guest directory
- Color according to your need
- Leatherette
- Made in China



- Mahito **Cubina**

- Tissue box
- Stainless steel bucket with tong
- Color according to your need
- Leatherette



- Mahito **Selecta**

- Waste bin with 2 compartments for garbage sorting
- Metal inner
- Color according to your need
- Leatherette



## Weighing scale

- *Supra black or Silver:*
  - Digital weighing scale silver
  - Exclusive elegant design
  - Supra tech lightening
  - 6mm tempered glass platform
  - Graduation 100g
  - Capacity: 180kg
  - Dim.30,2x30,2x2 cm
  - Batteries 2x1,5V AAA included
  - Certifications: CE norms
  - Belgium design and conception
  - Made in China
  - Warranty 2-years



## Weighing scale – from our partner

- *All models available:*

- Digital weighing scale silver
- Exclusive elegant design
- Supra tech lightening
- 6mm tempered glass platform
- Graduation 100g
- Capacity: 180kg
- Dim.30,2x30,2x2 cm
- Batteries 2x1,5V AAA included
- Certifications: CE norms
- Belgium design and conception
- Made in China
- Warranty 2-years



## Magnifying mirror – wall mounted

- **Bresta**

- Elegant design
- Brass chrome finishing
- 1x/3x magnification
- Single arm
- Full pivotal
- Dim 203x203 mm
- Belgium design and conception
- Made in China
- Warranty 2-years



- **Litina** (LED mirror) including **automatic sensor**

- Contemporary elegant design
- Brass chrome finishing
- 3 x magnification
- Single arm
- Full pivotal
- Dim 230 mm
- Belgium design and conception
- Made in China
- Warranty 2-years
- **Also available in black finishing**



## Magnifying mirror – wall mounted

- *Starlight (LED mirror)*

- Contemporary elegant design
- Brass chrome finishing black color
- 5 x magnification
- Two arms
- Full pivotal
- Dim 230 mm
- 110/240 V
- Belgium design and conception
- Made in China
- Warranty 2-years



- *Starlight free standing (LED mirror)*

- Contemporary elegant design
- Brass chrome finishing
- 5 x magnification
- Full pivotal
- Silicon ring to optimize stability
- Dim 230 mm
- Batteries operated
- Belgium design and conception
- Made in China
- Warranty 2-years



## Bathroom Set – Mahito Soft Black (also available in white)

### *Tissue box*

Elegant design  
Black resin soft touch effect  
Dim 130x130x150mm  
Belgium design and conception

### *Amenities tray*

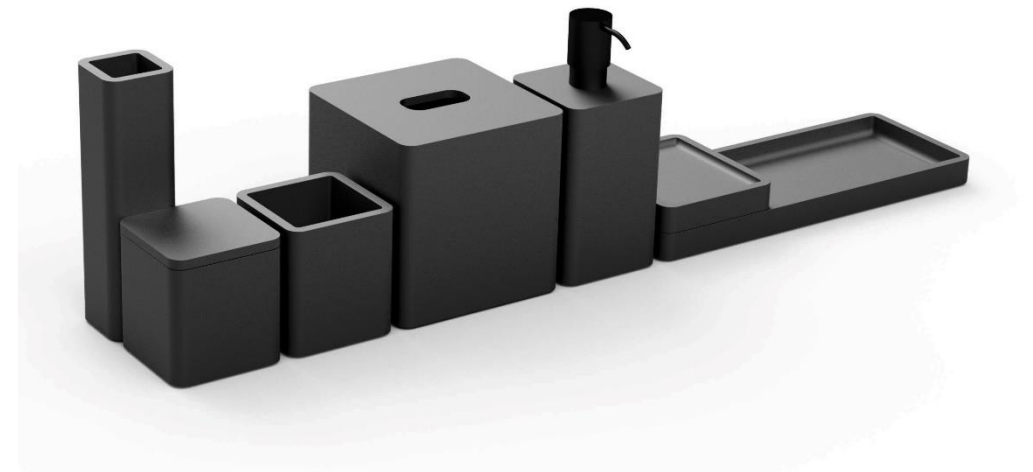
Elegant design  
Black resin soft touch effect  
Dim 250x125x25mm  
Belgium design and conception

### Soap dispenser – cotton box – towel tray and tumbler

Elegant design  
Black resin soft touch effect  
Tray dim 300x115x25mm  
Belgium design and conception

### Soap dish

Elegant Design  
Dim 100x25mm  
Belgium design and conception





## Bathroom Set - Mahito White Marble Brass touch

### *Tissue box*

Elegant design  
From marble powder, real grain and brass effect  
Dim 130x130x150mm  
Belgium design and conception

### *Amenities tray*

Elegant design  
From marble powder, real grain and brass effect  
Dim 250x125x25mm  
Belgium design and conception

### Soap dispenser – cotton box – towel tray and tumbler

Elegant design  
From marble powder, real grain and brass effect  
Tray dim 300x115x25mm  
Belgium design and conception

### Soap dish

Elegant Design  
Dim 100x25mm



## Bathroom Set - Mahito White Marble

### *Tissue box*

Elegant design  
From marble powder, real grain effect  
Dim 130x130x150mm  
Belgium design and conception

### *Amenities tray*

Elegant design  
From marble powder, real grain effect  
Dim 250x125x25mm  
Belgium design and conception

### Soap dispenser – cotton box – towel tray and tumbler

Elegant design  
From marble powder, real grain effect  
Tray dim 300x115x25mm  
Belgium design and conception

### Soap dish

Elegant Design  
Dim 100x25mm



## Bathroom Set - Mahito Soft Black Bronze Touch

### *Tissue box*

Elegant design

From marble powder, real grain and brass effect

Dim 130x130x150mm

### *Waste bin*

Elegant design

From marble powder, real grain and brass effect

Dim Ø200x280mm

Soap dispenser – cotton box – towel tray and tumbler

Elegant design

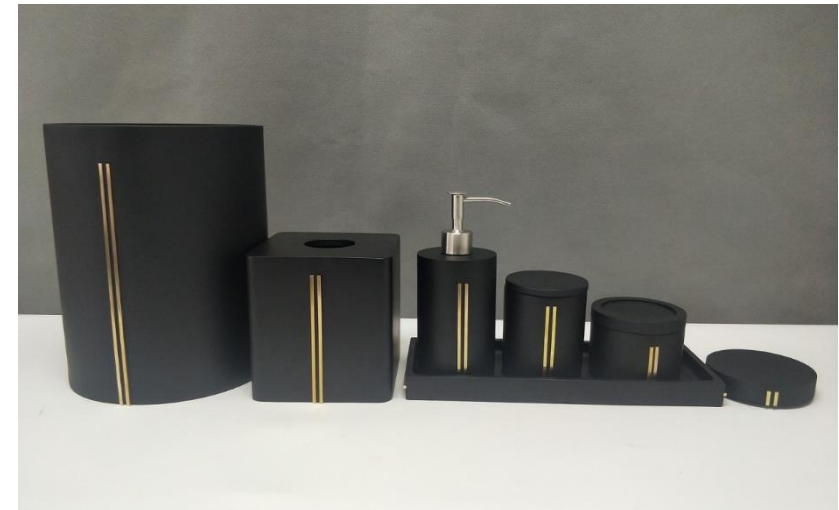
From marble powder, real grain and brass effect

Tray dim 300x115x25mm

### Soap dish

Elegant Design

Dim 100x25mm



## Bathroom items pedal bins

- *Mahito Pedal bin:*

- Contemporary design
- *Soft close & finger print proof*
- Plastic inner
- Solid mechanism
- 3L – 5L - 6L – 12L and 20L



- *Brabantia Alternatives*

- 3L or 5L
- Different finishings



## Bathroom items

- Mahito Soap Dispenser:
  - Contemporary design
  - Soft touch
  - Made in Europe



- Mahito toilet brush free standing
  - Contemporary design
  - Made in Europe



- Mahito toilet brush wall-mounted
  - Contemporary design
  - Made in Europe



# Shoe shine Machine

- Polifix 2 Plus:
  - Stainless steel Shoe shine machine
  - Elegant Design
  - Made in Germany
  - Warranty 3-years
- Ronda 30 standard:
  - Descreet in the corridors
  - Elegant Design
  - Made in Germany
  - Warranty 3-years

